

## Signing the Poll Book

Effective immediately, voters must sign the poll book in order to obtain a ballot.

The poll book now contains a signature block for each voter. Although there are two identical poll books for every reporting unit, only one poll book needs to be signed.

Voters unable to sign the poll book because of a disability are exempt from this requirement. Simply tell the Election Officials that you are unable to sign due to a disability. You do not need to disclose the nature of your disability to the Election Officials or to any observers. Election Officials will write "exempt by order of inspectors" in your signature block.

## Voter Registration Changes

You now must reside at your address for 28 consecutive days to be eligible to vote.

You may no longer use a corroborating witness as proof of residence.

If you do not have a utility bill, bank statement, Wisconsin ID, paycheck, government document, or lease in your own name at your current address, you need to register more than 20 days before the election.

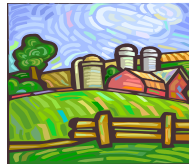
First time Wisconsin voters registering by mail still need to send proof of residence.

**Town of Perry**

**Dane County**

**Wisconsin**

[www.perry-wi.gov](http://www.perry-wi.gov)



**Voter Public Access**

<https://vpa.wi.gov>

# Recent Changes to Wisconsin Election Laws

Effective for 2011 and 2012  
elections

**Town of Perry  
Dane County, Wisconsin**

[www.perry-wi.gov](http://www.perry-wi.gov)

Mary L. Price  
Town Clerk  
[mlprice@mhtc.net](mailto:mlprice@mhtc.net)  
608-437-4553

## Photo Identification

Beginning in 2012, you cannot receive a ballot until you show one of the following forms of photo ID. **Your photo ID does not need to show a current address.**

### Acceptable forms of Voter ID

- ★ Wisconsin driver's license expiring after 11/2/10
- ★ Wisconsin DOT-issued photo ID card expiring after 11/2/10
- ★ U.S. passport expiring after 11/2/10
- ★ Military ID card expiring after 11/2/10
- ★ Certificate of naturalization issued within last 2 years
- ★ Unexpired Wisconsin driver's license or state ID receipt
- ★ ID card issued by a federally recognized Indian tribe in Wisconsin
- ★ Unexpired ID issued by a Wisconsin accredited university or college—must contain issuance date, student signature, and expiration date within 2 years of issuance, along with proof of current enrollment.

If you are eligible to vote but do not have a Wisconsin ID card, you may obtain a **free** ID for purposes of voting. You need to check a box on the DMV application to indicate that you need the ID for voting purposes.

One of the documents needed to obtain an ID from the DMV is a certified birth certificate or passport; these documents are not free. We recommend applying for an ID as soon as possible.

## Changes to Absentee Voting

Absentee voting in the Clerk's Office is now restricted to the two weeks before an election. Absentee voting ends at the close of business the Friday before the election.

The new law prohibits absentee voting the Saturday, Sunday, or Monday before an election.

Beginning in 2012, absentee voters in the Clerk's Office must present the same type of photo ID required at the polls (see list on the left).

## Absentee Ballot Requests

Beginning in 2012, absentee requests for ballots sent by mail must be accompanied by a photocopy of an acceptable form of voter ID (see list on the left). You will not need to send photocopies with future absentee ballot requests, as long as your name and address remain the same.

If submitting an absentee request via fax or e-mail, you must return a photocopy of your acceptable ID in your absentee envelope. When returning an absentee ballot to the Clerk's Office, please read the instruction letter provided by the Clerk very carefully. We want your vote to be counted!

## Photo ID Exemptions

Photo ID is not required for the following absentee voters:

- Military voters
- Voters who are permanently overseas

Photo ID will not be required but will be replaced by alternative documentation requirements for:

- Voters on the permanent absentee list because they are indefinitely confined
- Nursing home residents and other voters who have ballots delivered by a Special Voter Deputy

## Hospitalized Voters

Hospitalized voters may appoint an agent to pick up their ballot from the Clerk's Office. The agent must present the hospitalized voter's photo ID to the Clerk's Office.

## Provisional Ballots

Voters who are required but unable to provide photo ID will become provisional voters.

**Provisional ballots are not counted** unless the voter provides the Clerk's office with an acceptable photo ID by 4 p.m. the Friday after the election.