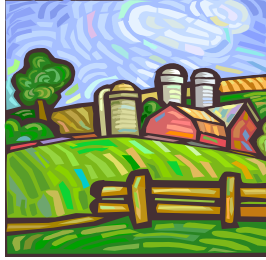




Outdoor and Refuse Burning Ordinance

adopted April 14, 2008

- Materials that may NOT be burned:
 1. Rubbish or garbage including but not limited to
 - a. food wastes, food wraps, packaging,
 - b. animal carcasses,
 - c. paint or painted materials,
 - d. furniture,
 - e. composite shingles,
 - f. construction or demolition debris or
 - g. other household or business wastes.
 2. Waste oil or other oily wastes except used oil burned in a heating device for energy recovery
 3. Asphalt and products containing asphalt
 4. Treated or painted wood
 5. Any plastic material
 6. Rubber including tires and synthetic rubber-like products
 7. Newspaper, corrugated cardboard, container board, office paper and other materials that must be recycled in accordance with the recycling ordinance except - small quantities of confidential papers from a residence.



Outdoor and Refuse Burning Ordinance

adopted April 14, 2008

- **Open Burning**

Open burning of leaves, weeds, brush, stumps, clean wood other vegetative debris is allowed and shall be conducted in a safe, nuisance free manner, when wind and weather conditions are such as to minimize adverse effects and not create a health hazard or a visibility hazard;

Open burning shall be conducted only on the property on which the materials were generated or at a facility approved by and in accordance with provisions established by the Department of Natural Resources and the Fire Chief.

Open burning of weeds or brush or grasses on rural lands is allowed if conducted in accordance with other applicable provisions of this ordinance.

Burning of trees, limbs, stumps, brush or weeds for clearing or maintenance of rights-of-way is allowed.

Open burning under this section shall only be conducted at a location at least fifty (50) feet from the nearest building which is not on the same property.

Open burning shall be constantly attended and supervised until the fire is completely extinguished and is cold.

No open burning may be conducted on days when the Department of Natural Resources has declared an ozone action day applicable to the Town of Perry

- **Outdoor wood-fired or biomass-fueled furnaces.**

The outdoor wood-fired or biomass-fueled furnace shall have a chimney that extends at least fifteen (15) feet, or the highest limit recommended by the manufacturer, above the ground surface. If there are any residences within five hundred (500) feet of the furnace, the chimney shall also extend at least as high above the ground surface as the height of the highest roof of all such residences